

estate agents **auctioneers**



4A Ambra Terrace Ambra Vale East, Cliftonwood, Bristol, BS8 4RG

£470,000

AMBRA TERRACE

Hollis Morgan - A well presented two double bedroom Victorian home with private courtyard garden situated moments Clifton Village.

- Period Terrace
- Open Plan
- Two Double Bedrooms
- Family Bathroom
- Gas Central Heating
- Hotwells Primary School
- No Onward Chain
- New Roof

COVID UPDATE

Following Government advice (04.01.21) the housing market will remain open during the new lockdown in England.

Hollis Morgan are open for viewings and valuations whilst adhering to the latest social distancing and PPE rules.

Please contact us should you have any questions.

The Property

Upon entry you are greeted by a charming entrance hall which beckons you into light filled front to back open plan lounge/ dining area complete with solid wood flooring, sash window to front elevation and multiple fireplaces. A separate modern fitted kitchen is located to the rear, complete with integrated appliances, a range of matching wall and base units, laminated work tops, and gas combination boiler. The kitchen also provides access to a private courtyard garden.

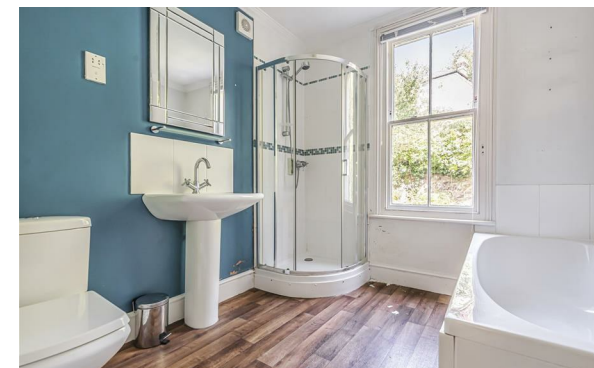
To the first floor via a traditional staircase is a large family bathroom comprising separate bath, mains fed shower, basin and W.C. Bedroom one spans the width of the property and again benefits from a central sash window and period fireplace. A further double bedroom again substantial in size completes the accommodation.

Location

Cliftonwood and the surrounding areas, with its Victorian and Georgian architecture, are amongst the most sought after locations in the City. The area offers charm alongside excellent amenities with independent shops, boutiques, cafes, bars and restaurants to be found on both Whiteladies Road and Clifton Village including Clifton Down shopping Centre. The Downs offers four hundred acres of green public space whilst Brunel's Clifton Suspension Bridge provides a gateway to the Ashton Court Estate with its woodlands, mountain bike trails and walks whilst there is excellent access to the exciting Harbourside district, the City Centre and Temple Meads.

Please Note

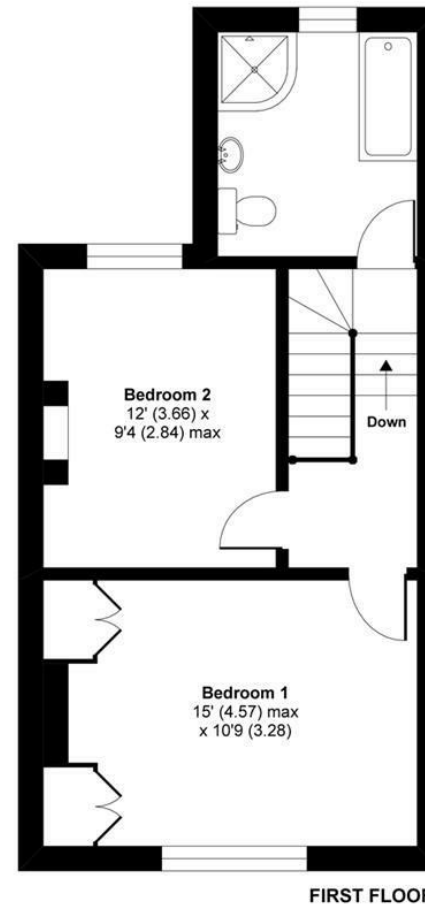
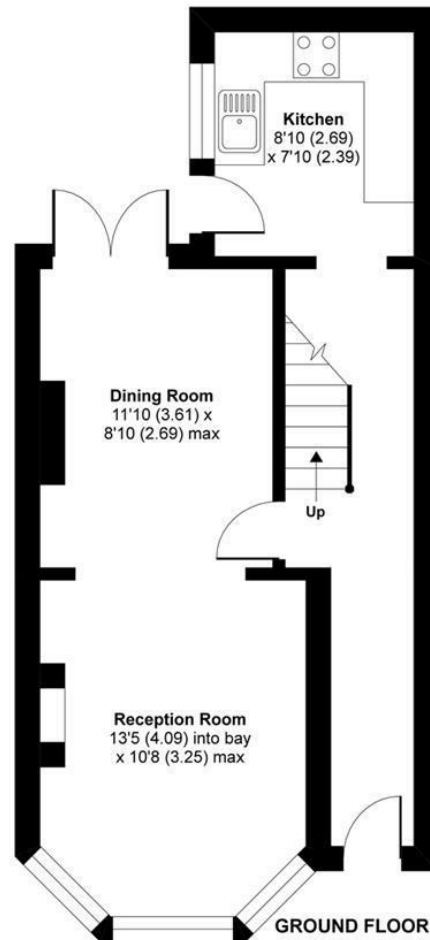
We endeavour to make our sales details accurate and reliable but they should not be relied on as statements or representations of fact and they do not constitute any part of an offer or contract. The seller does not make any representation or give any warranty in relation to the property and we have no authority to do so on behalf of the seller.



Ambra Vale East, Bristol, BS8

Approximate Area = 868 sq ft / 80.6 sq m

For identification only - Not to scale



Floor plan produced in accordance with RICS Property Measurement Standards incorporating International Property Measurement Standards (IPMS2 Residential). © n/checom 2020. Produced for Hollis Morgan. REF: 647297

TEL | 0117 933 9522 | 9 Waterloo Street, Clifton, Bristol BS8 4BT

www.hollismorgan.co.uk | post@hollismorgan.co.uk

Hollis Morgan Property Limited, registered in England, registered no 7275716
Registered address, 5 Upper Belgrave Road, Clifton, Bristol BS8 2XQ

Energy Efficiency Rating		Environmental Impact (CO ₂) Rating	
Current	Potential	Current	Potential
Very energy efficient - lower running costs		Very environmentally friendly - lower CO ₂ emissions	
(92 plus) A		(92 plus) A	
(81-91) B		(81-91) B	
(69-80) C		(69-80) C	
(55-68) D		(55-68) D	
(39-54) E		(39-54) E	
(21-38) F		(21-38) F	
(1-20) G		(1-20) G	
Not energy efficient - higher running costs		Not environmentally friendly - higher CO ₂ emissions	
England & Wales	EU Directive 2002/91/EC	England & Wales	EU Directive 2002/91/EC

hollis
morgan
